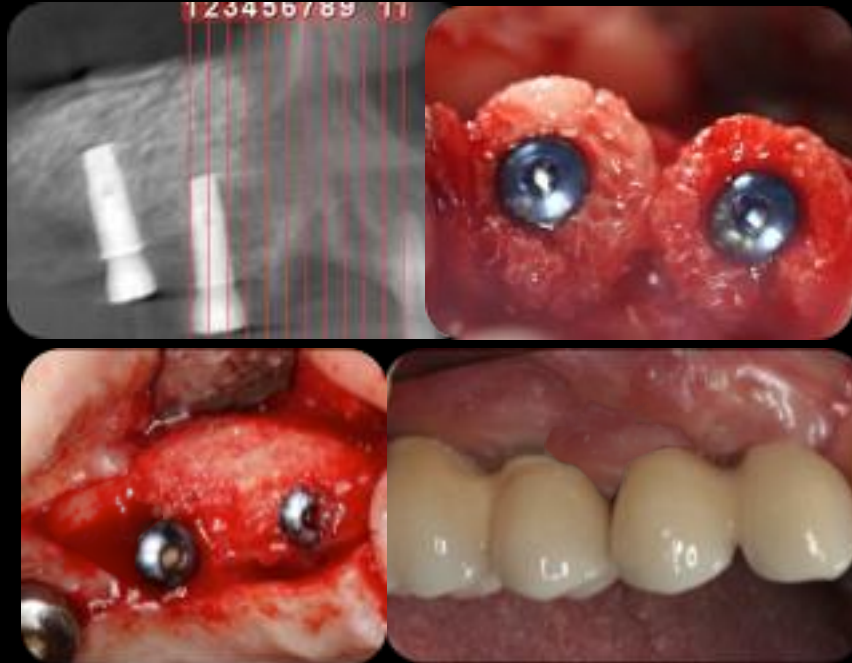


AnyRidge System & Ring Technique



CASE REPORT



Name: Dr. Iulian Filipov
(Maxillofacial Surgeon)
Opera Dental Clinique
Nation: Romania



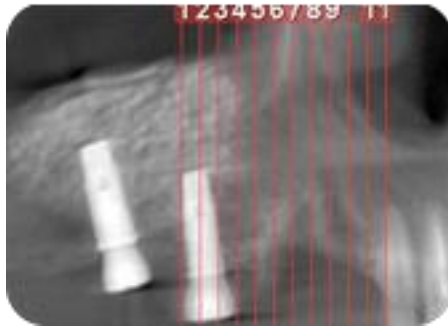


fig 1

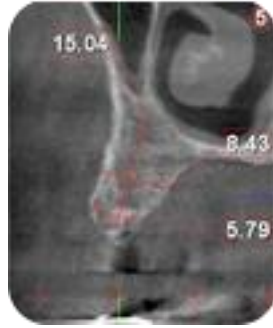


fig 2

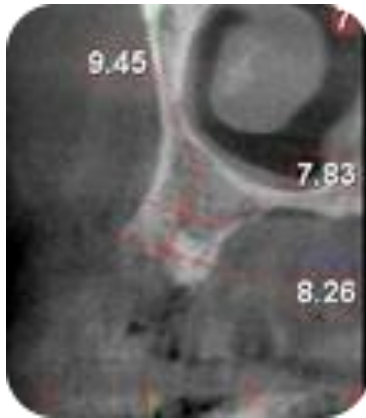


fig 3



fig 4

52 years old woman was referred for restoration of 1.4, 1.5 teeth. The extractions were made 4 months prior the initial examination. CT scan reveals a vertical bone loss of 6 mm at 1.4 bone crest and 4 mm at 1.5 bone crest.



fig 5

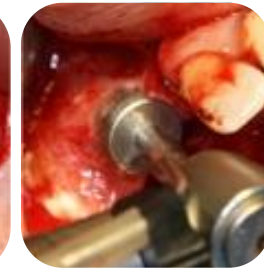


fig 6



fig 7



fig 8



fig 9

Incision was made in such a way to leave the soft tissue adjacent to the healing abutment in place (fig 5).

The donor site was prepared at 300 rpm under saline irrigation (fig 6). A 10 mm ring allograft was cut in two pieces (4mm/6mm) and placed upon the vertical (fig 7). Two AnyRidge implants (3.5/11.5 & 3.5/13 mm) were placed, fixing the ring allograft in place (fig 8, fig 9)



fig 10



fig 11



fig 12



fig 13

Allograft particles were placed over the rings, after the sharp edges were smoothed and a resorbable membrane was placed over the graft material (fig 11). Implant primary stability was checked with Osstell ISQ : 58 - isq value for the implant placed in 1.4 position, and 69 - isq value for the implant placed in 1.5 position



fig 14



fig 15



fig 16

6 months after surgery, the implants were uncovered and the biological stability was evaluated again with Osstell ISQ: 70 isq for 1.4 (fig 18) and 75 isq (fig 19) for 1.5 Healing abutments were placed (fig 20).



fig 17



fig 18



fig 19



fig 20

After 6 weeks the final restoration was delivered (fig 20)